

Johann Sebastian Bach
Orchestral Suite No. 3
In D Major, BWV1068

Violoncello
Contrabasso

Ouverture

7

19

18

23

1. 2. 3. Vla.

30

34

39

43

46

54

Violoncello / Contrabasso

59

63

67

71

78

83

89

94

97

102

106

112

117

1. 2.

Violoncello / Contrabasso

Air

Musical score for 'Air' in G major, C major, and G major sections. The score consists of four staves of music. The first staff is the beginning of the piece. The second staff starts at measure 5 and includes a first and second ending. The third staff starts at measure 9. The fourth staff starts at measure 14 and ends with a repeat sign.

Gavotte I

Musical score for 'Gavotte I'. The score consists of three staves of music. The first staff is the beginning of the piece. The second staff starts at measure 6. The third staff starts at measure 13 and ends with a repeat sign.

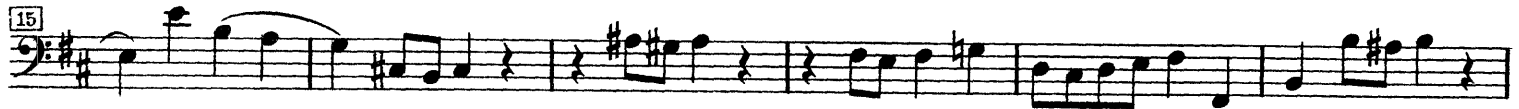
Gavotte II

Musical score for 'Gavotte II'. The score consists of four staves of music. The first staff is the beginning of the piece. The second staff starts at measure 8 and includes a triplet. The third staff starts at measure 16 and includes first endings. The fourth staff starts at measure 24 and includes a triplet and ends with a repeat sign.

Bourrée

Musical score for 'Bourrée'. The score consists of one staff of music. The piece begins with a repeat sign and a first ending.

Gavotte I da capo



Gigue

